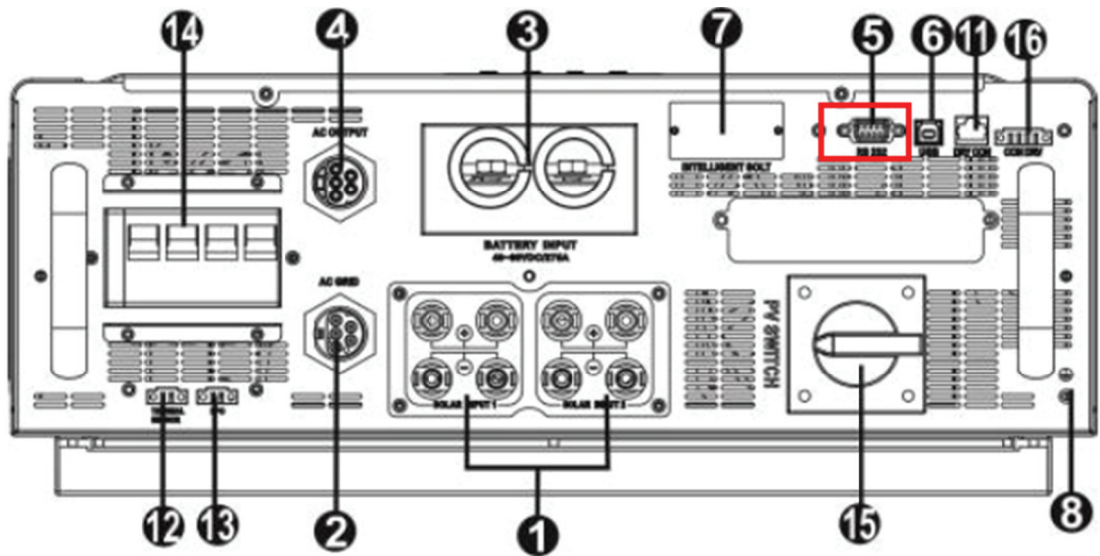


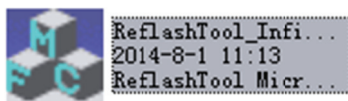
# 10KW upgraded Firmware SOP

1. Make sure all of software is close, such as SolarPower.
2. Startup MPI 10KW and use RS232 cable connect between PC and the com port of MPI10KW which show as below.

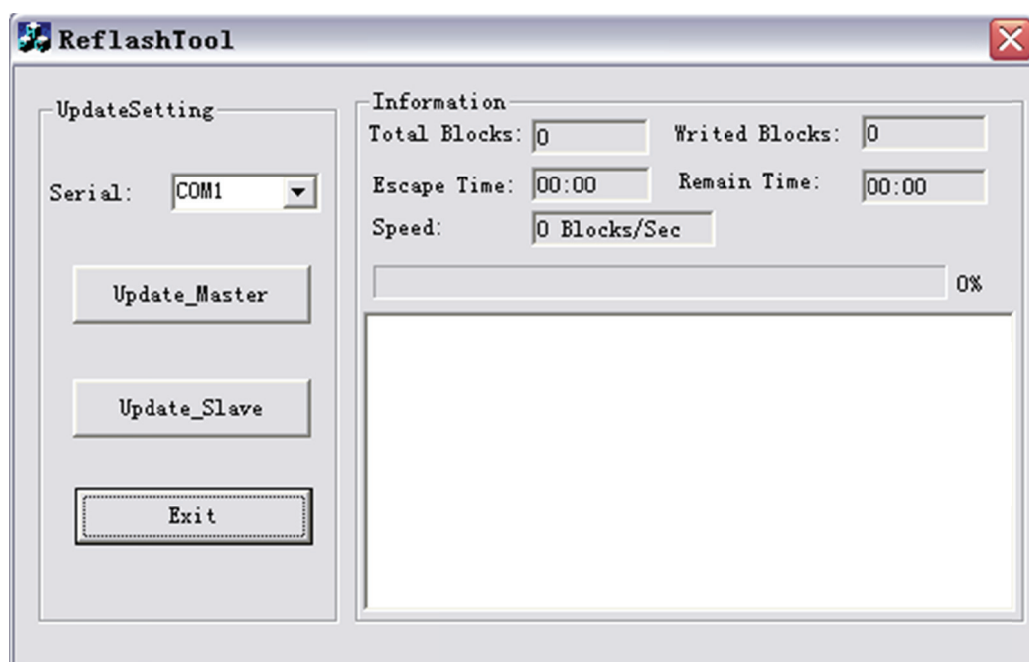
At this step, LCD should be light.



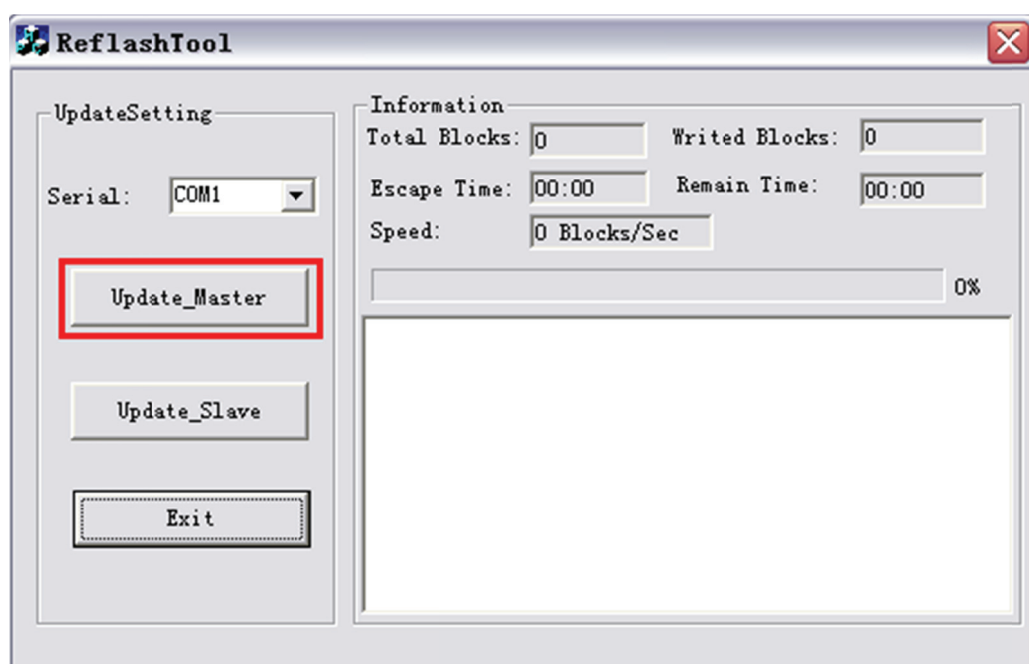
3. Decompress the package of upgraded tool and startup "ReflashTool\_Infini10KW.exe".

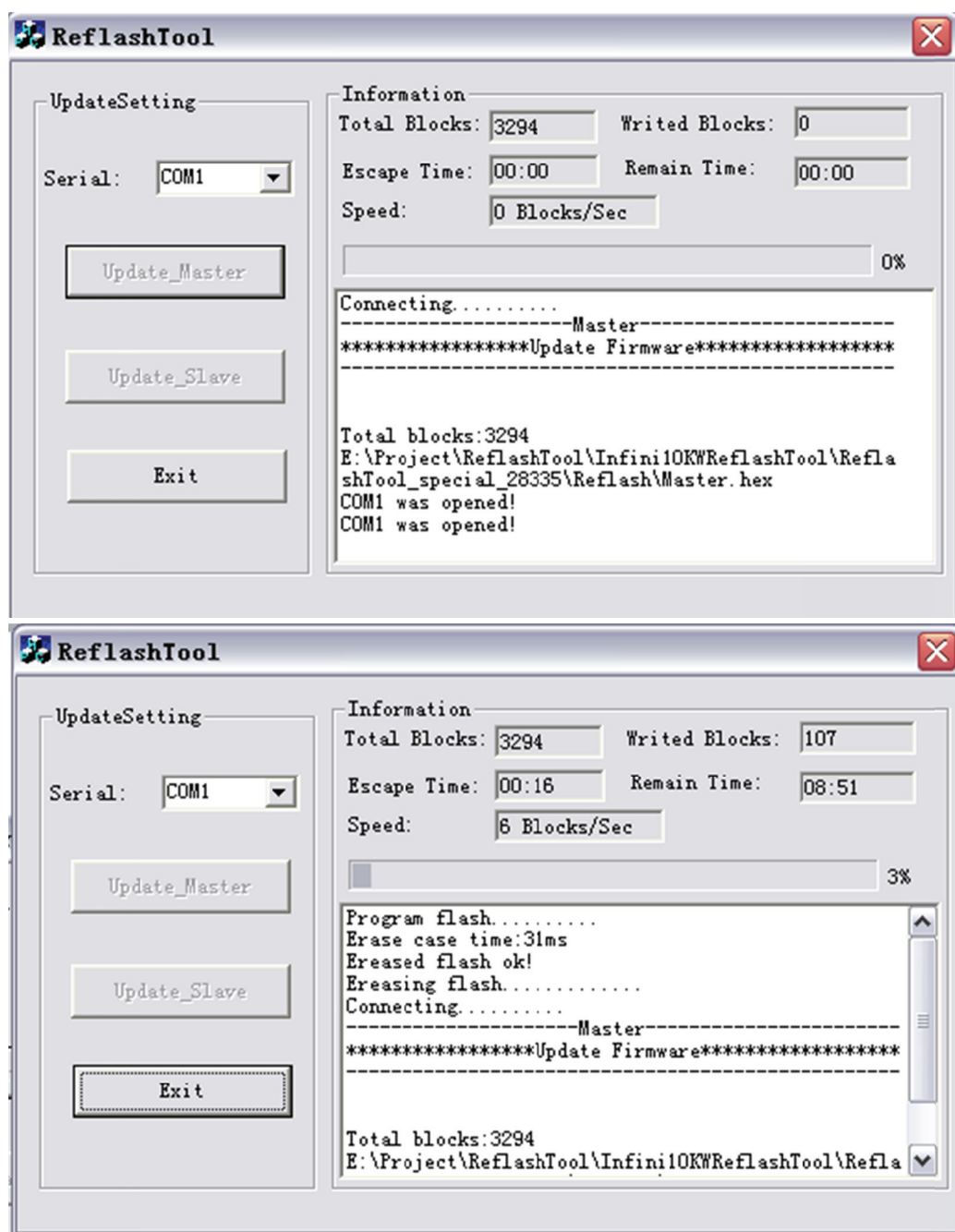


4. The system will show a dialog as below.



5. Press "Update\_Master" button, upgrading will be started.





6. After few minutes, the process will be finished.